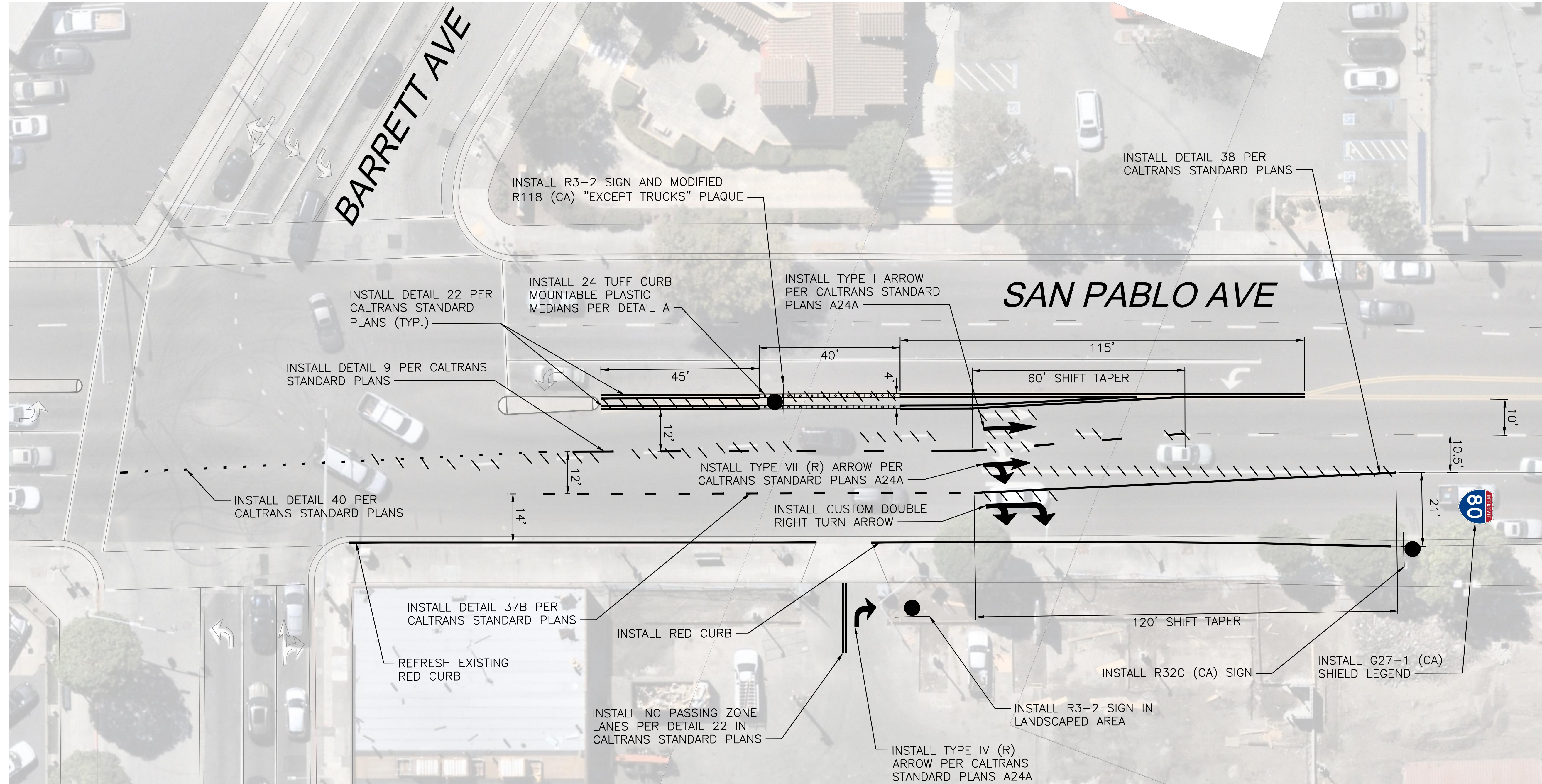
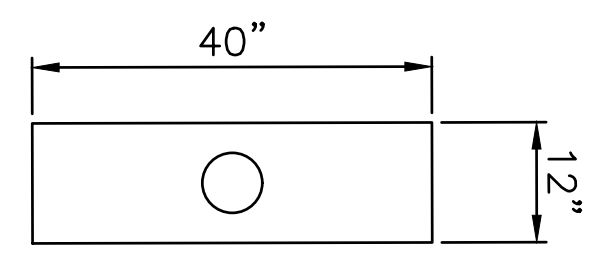


Jan 17, 2025 - 10:12am



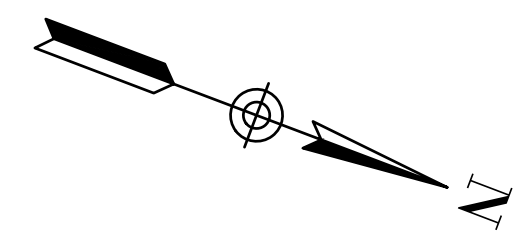
**LEGEND**

-  INSTALL SIGN AND POST
-  REMOVE EXISTING PAVEMENT MARKING BY GRINDING METHOD



**DETAIL A - TUFF CURB**

N.T.S



Date	Revision	By

SCALE 1" = 16'  
 DATE 1/20/2025  
 JOB NO. RIC900-14  
 DRAWING NUMBER

**Whitlock & Weinberger Transportation, Inc.**  
 414 13th Street, 5th Floor,  
 Oakland, CA 94612  
 (510) 444-2600



DRAWN BY JJP

DESIGNED BY JJP

CHECKED BY AJP

DATE

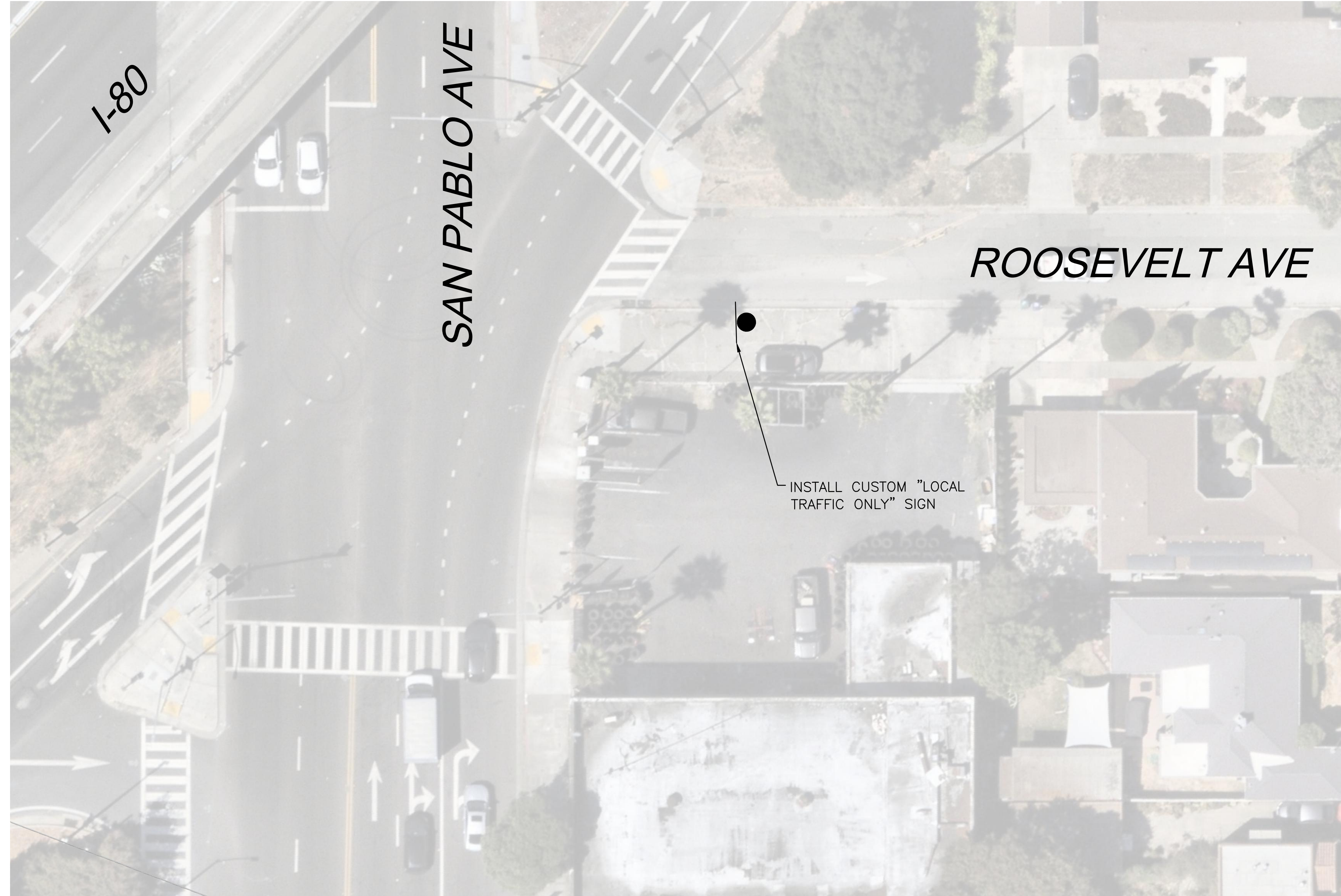
DOLLAR TREE SIGNING & STRIPING  
 RICHMOND, CA

CONCEPT EXHIBIT

FOR REDUCED PLANS, THE ORIGINAL SCALE IS IN INCHES

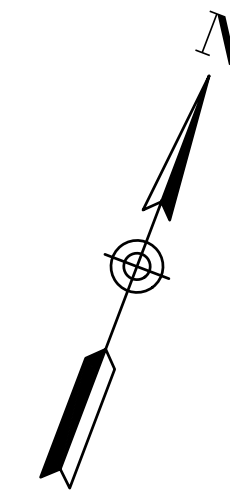


Jan 17, 2025 - 10:12am



**LEGEND**

● INSTALL SIGN AND POST



Date	Revision	By

DOLLAR TREE SIGNING & STRIPING  
RICHMOND, CA

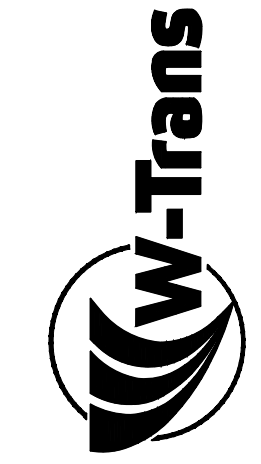
CONCEPT EXHIBIT

DESIGNED BY  
JFP

CHECKED BY  
AIP

DRAWN BY  
JFP

DATE



**Whitlock & Weinberger  
Transportation, Inc.**  
414 13th Street, 5th Floor.  
Oakland, CA 94612  
(510) 444-2600

FOR REDUCED PLANS, THE ORIGINAL SCALE IS IN INCHES

0 1 2 3